

# JET \ Brella

J/B #: PW305A-09-JB-SR

## Technical Specifications

### Complete Inlet and Exhaust Cover Kit

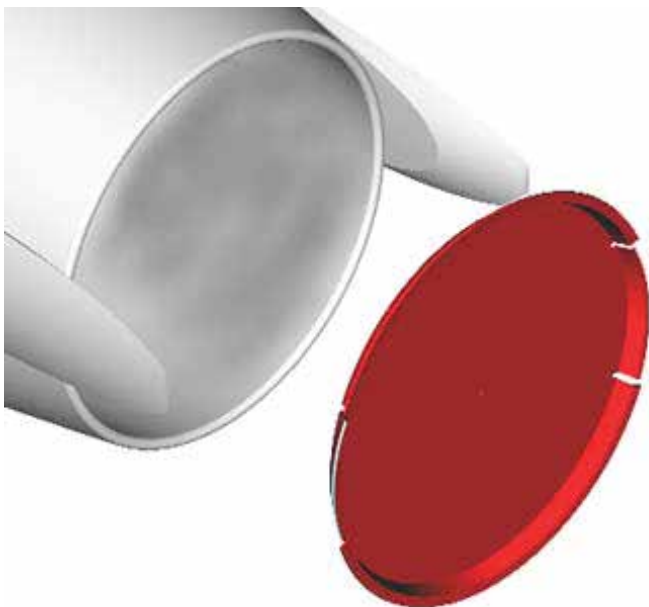
Designed to fit: **BOMBARDIER**

**LEARJET 60**

Jet Engine Model: **PW305A**

#### INLET COVER DETAILED SPECIFICATIONS:

Venting Type -	Hi-Flow Dual Venting
Height -	32.0" Stowed Position
Width -	7.0" Stowed Position
Weight -	4.5 lbs.
Hardware Attachment -	Flat hook & snap
Cone -	Composite, neoprene foam lined, with spinner bearing
Carry Bag -	Breathable mesh, loops for vertical storage.
Options -	Colors, logos & mesh



#### EXHAUST COVER DETAILED SPECIFICATIONS:

Material -	Rigid thermoformed plastic
Diameter -	25.0"
Thickness -	1.75"
Weight -	6 Lbs each
Hardware Attachment -	None
Options -	Restraint webbing, venting, reflective stripes, "REMOVE BEFORE FLIGHT" flags, carry bag, printing/silkscreening

#### Tech Note:

*No drilling is required for the installation and/or operation of any Jet \ Brella inlet, exhaust, or APU cover.*

JET \ BRELLA INC. 6849 HAYVENHURST AVENUE, VAN NUYS, CALIFORNIA U.S.A. 91406

TELEPHONE: 1-818-780-1769 FACSIMILE: 1-818-994-9456 WWW.JETBRELLA.COM

SALES EMAIL: SALES@JETBRELLA.COM TECH SUPPORT & SERVICE EMAIL: TECH@JETBRELLA.COM